

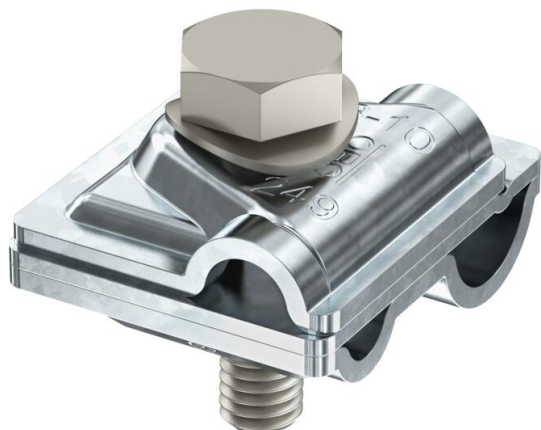
# Technical data sheet

## FT Vario quick connector

Item number: 5311441



Quick connector to create T, cross and parallel connections. Mounting with stainless steel M10 x 40 screws. Suitable for reinforced steels Ø 6–16 mm and flat conductors Ø 8–10 mm. Conforms to the requirements according to DIN VDE 0185-305 (IEC 62305).



**St** Steel

**FT** Hot-dip galvanised

### Master data

Item number	5311441
Type	249 6-16 ST
Description 1	Quick connector
Description 2	Vario
Manufacturer	OBO
Material	Steel
Surface	Hot-dip galvanised
Surface standard	DIN EN ISO 1461
Smallest sales unit	10
Unit of quantity	Piece
Weight	14.4 kg
Weight unit	kg/100 pc.
CO2 Footprint (GWP) Cradle-to-Gate	0,5711 kg CO2e / 1 Piece

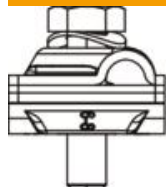
# Technical data sheet

## FT Vario quick connector

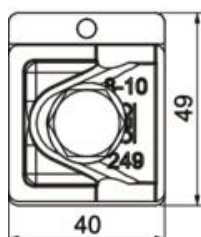
Item number: 5311441



### Dimensions



Length	49 mm
Width	40 mm
Dimension A	40 mm
Dimension B	49 mm



### Technical data

Type of fastening screw	Hexagonal bolt
Type of connector	Multipurpose connection clamp
Suitable for connection	Round conductor Rd 8-10 / Reinforcing steel $\varnothing$ 6-16
Fit	Rd 8-10 / $\varnothing$ 6-16 mm
Round conductor diameter, conductor 1, max.	10 mm
Round conductor diameter, conductor 1, min.	8 mm
Round conductor diameter, conductor 2, max.	16 mm
Round conductor diameter, conductor 2, min.	6 mm
Intermediate plate	yes